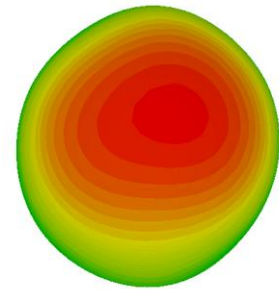
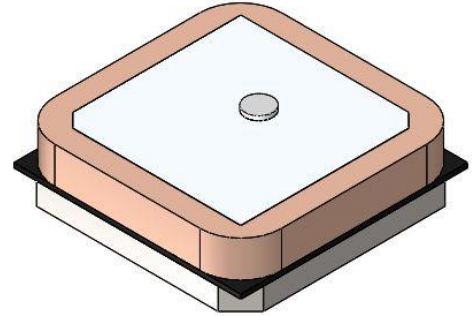


## Features

- GPS antenna
- Case mounting
- High efficiency
- Quick integration



1575MHz

## Specification

Items	Antenna	LNA
Frequency (MHz)	1575	
Gain	3 dBic	18±2 dB
VSWR	2.0:1	
Impedance (Ohms)	50	
Polarization	R.H.C.P	
Noise Figure (dB)		1.5
DC Voltage (V)		3.6
Operating Current(mA)		≤ 10
Dimension (mm)	25 x 25 x 6.9	
Weight (g)	12.2	
Connector	IPEX	
Cable length (mm)	100	
Operating Temp (°C)	-30°C ~ +80°C	

## Mechanical Dimensions

